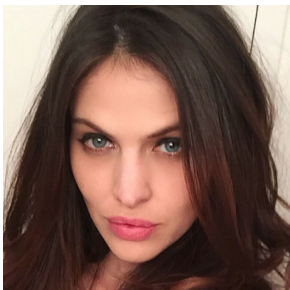


# HANA NITSCHKE



60%  
AUDIENCE ON  
*Instagram*  
ENGAGEMENTS  
PER POST  
**387.81**



POSTS IN THE  
LAST 30 DAYS  
**36**  
FOLLOWERS  
**43,390**

**72,259**



**TOTAL FOLLOWERS**

**125**

**CURRENT D'MARIE  
MODEL RANK**

**LAST 30 DAYS**

TOTAL SOCIAL POSTS:  
70

TOTAL SOCIAL ENGAGEMENTS:  
15,058

**facebook.**

**20,629**

ENGAGEMENTS  
PER POST  
**137.13**



**8,240**

**TWITTER FOLLOWERS**

**AVG. RETWEETS**

**0.0**



*D'MARIE*

DATA PROVIDED BY  
26-Jan-2016